



MitraClip®

World Wide Commercial Experience

Valves Repaired. Lives Improved.

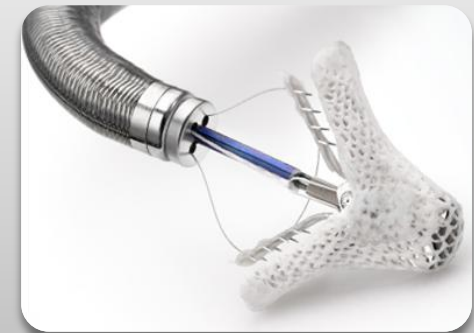
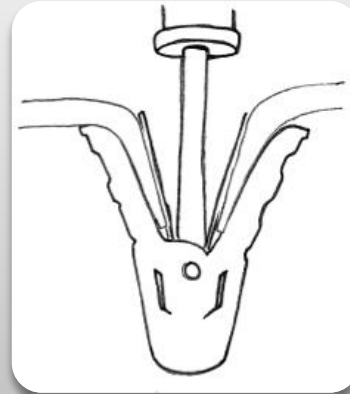
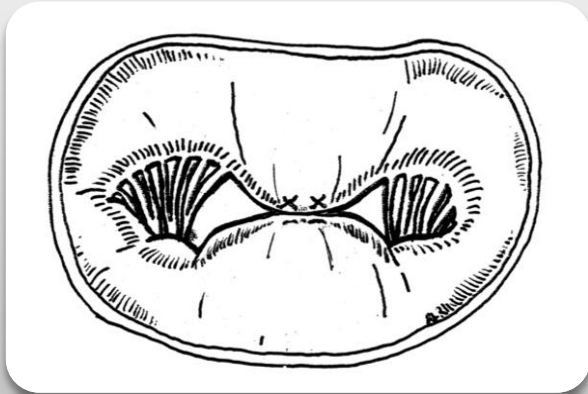
Carlos G. Hernandez, MBA
Sr. Product Manager, Strategic Planning
Abbott Vascular

October, 2014

MitraClip

Transcatheter Mitral Valve Repair

- Based on “Alfieri Stitch” surgical procedure
- Establishes leaflet coaptation by capturing and drawing them together



System Components



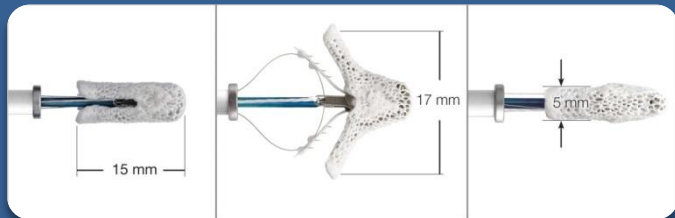
Steerable Guide Catheter

- 24 French steerable catheter
- Percutaneous venous access



Clip Delivery System

Contains the implant attached to a highly maneuverable delivery catheter with all controls at the proximal end

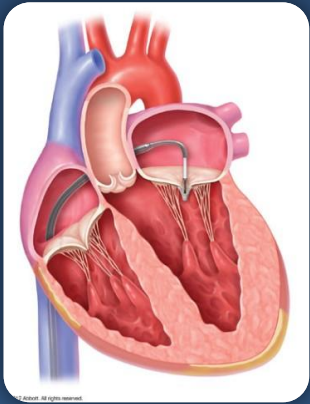


MitraClip Device (Implant)

- Cobalt chromium construction
- Polyester cover designed to promote tissue growth
- Magnetic resonance conditional to 3 Tesla*

*Static magnetic field up to 3 Tesla; maximum spatial gradient in static field of 2500 gauss/cm or less; maximum whole-body averaged specific absorption rate (SAR) of 3.0 W/kg for 15 minutes of scanning.

MitraClip Procedure



- Transfemoral delivery of implant via transseptal access to LA



- Stable intra-procedural hemodynamics
- Real time efficacy

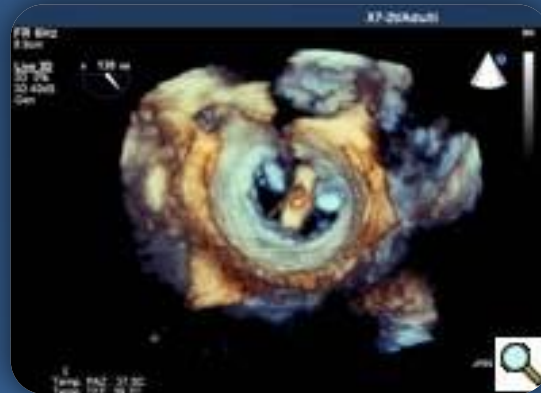
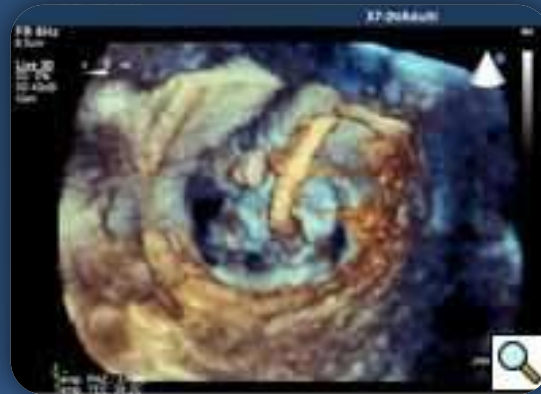
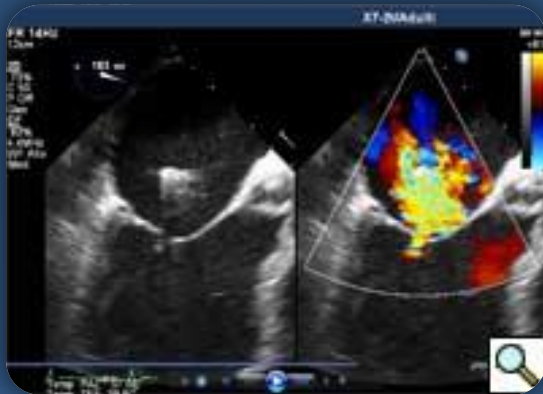


- Permanent implant

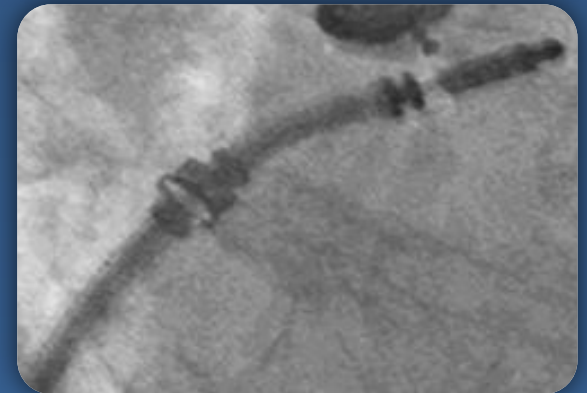
Procedure Imaging

MitraClip[®] Procedure is Driven by Echocardiography

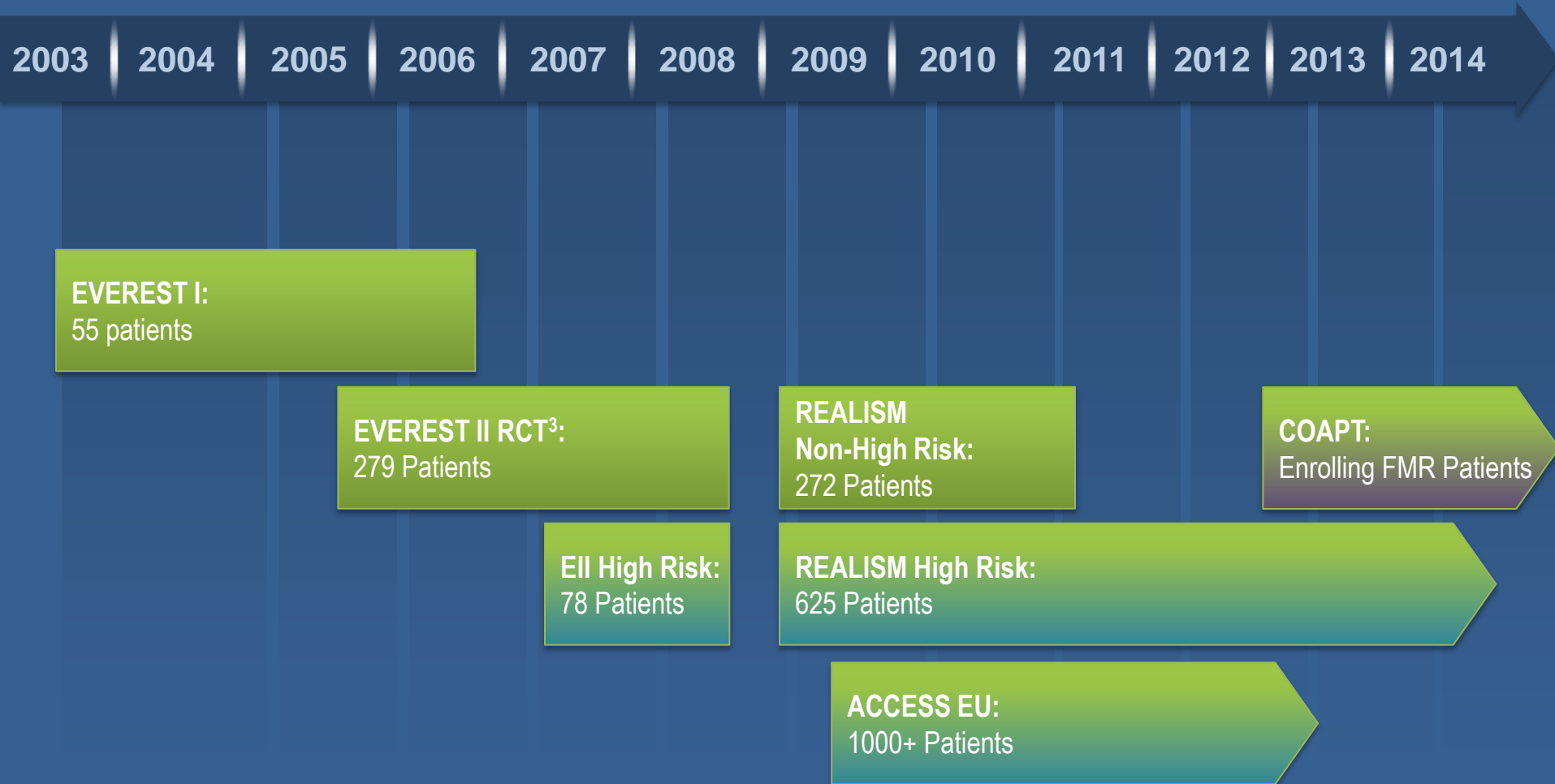
Echocardiography (Primary Imaging)



Fluoroscopy (Secondary Imaging)



Clinical Development



1. As of 02//28/2014 includes worldwide commercial and clinical procedures. Source: Abbott Vascular Data on File.

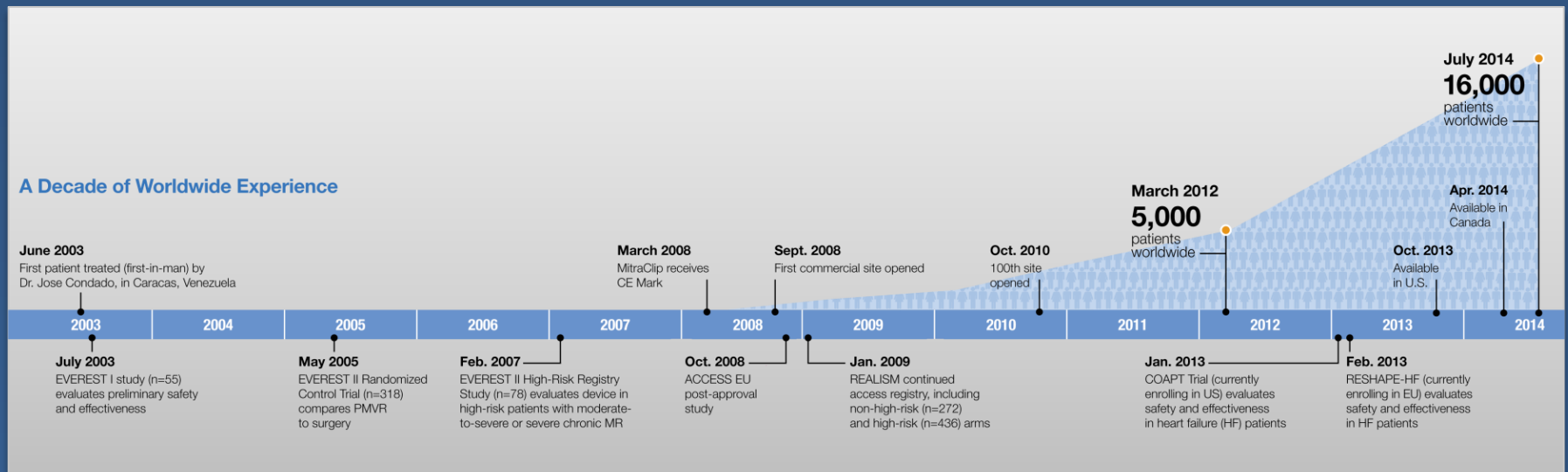
2. First-time procedures only

3. Of the 184 patients randomized to Device, 178 received Device. Of the 95 patients randomized to Control, 80 underwent mitral valve surgery. 60 roll-in patients.

4. Includes 25 PR DMR patients from the EVEREST II High-Risk Registry and 102 PR DMR patients from EVEREST II REALISM High Risk (including 4 Compassionate Use PR DMR patients)

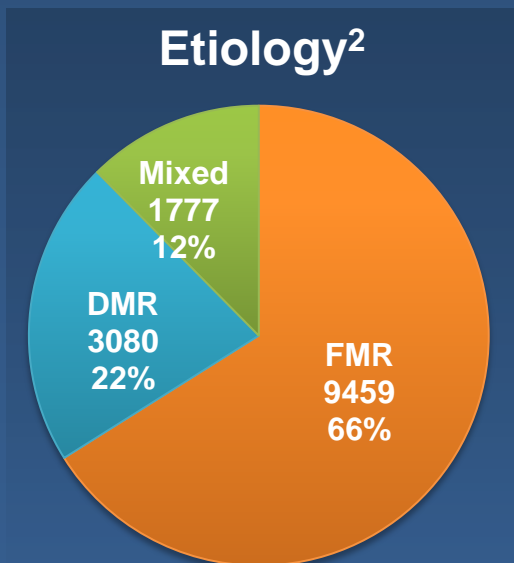
Worldwide Experience

Study	Population	N*
Clinical Trials (EVEREST I – II)	Feasibility & RCT	377
Continued Access Registries (REALISM, ACCESS, Compassionate/Emergency Use)	Non-randomized patients	1,818
Commercial Use	Commercial patients	14,232
Total World Wide MitraClip Patients Treated		16,427

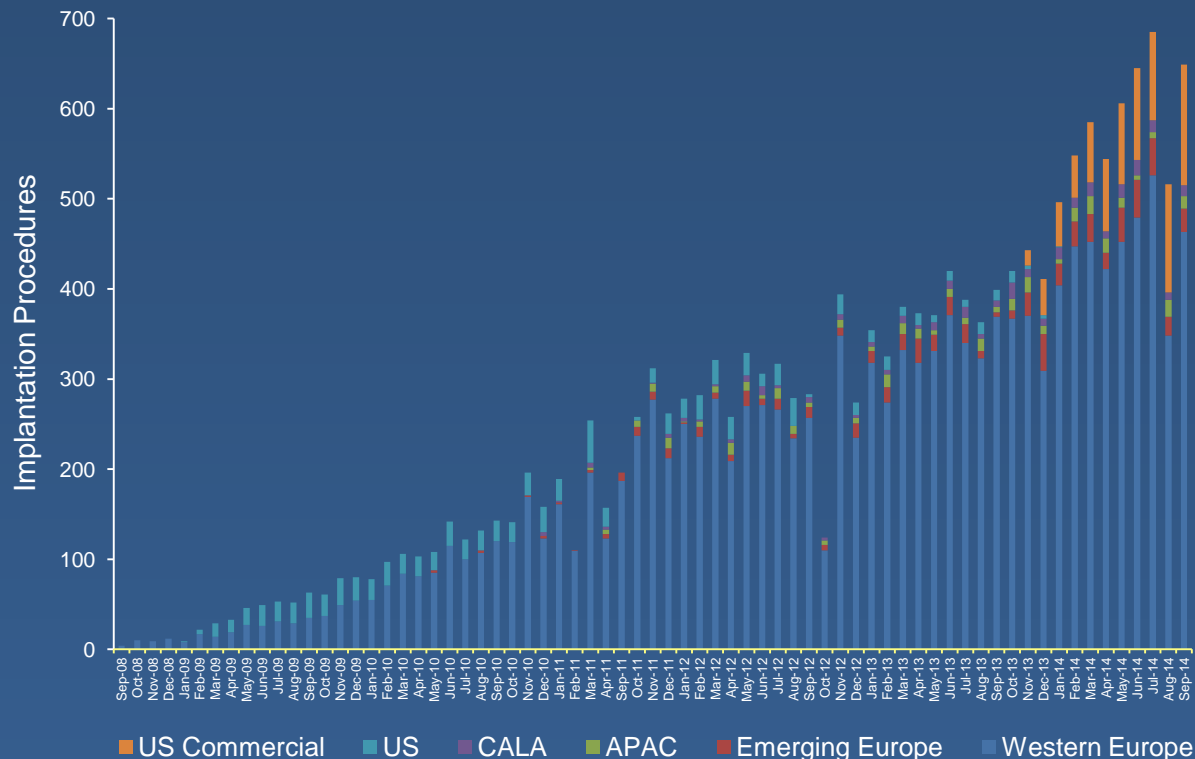


Global Commercial MitraClip® Implant Experience

- Treating Centers 400+
- Patients¹ 15,085
- Implant Rate¹ 96%

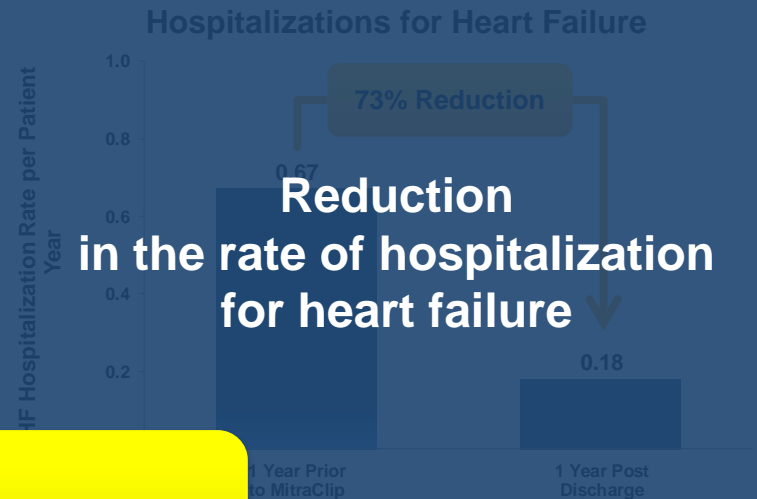
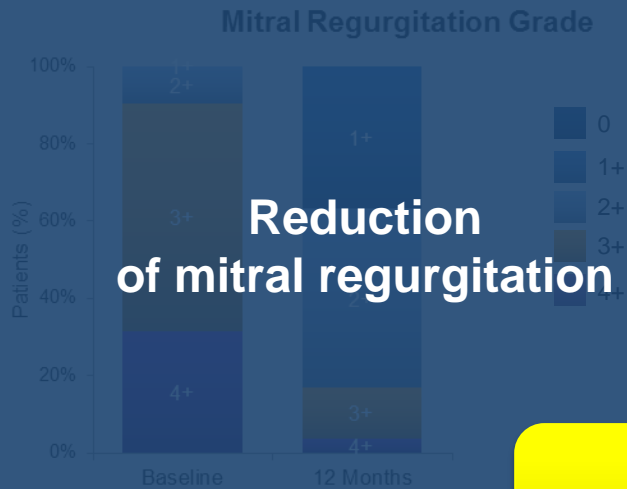


World Wide Experience MitraClip Procedures

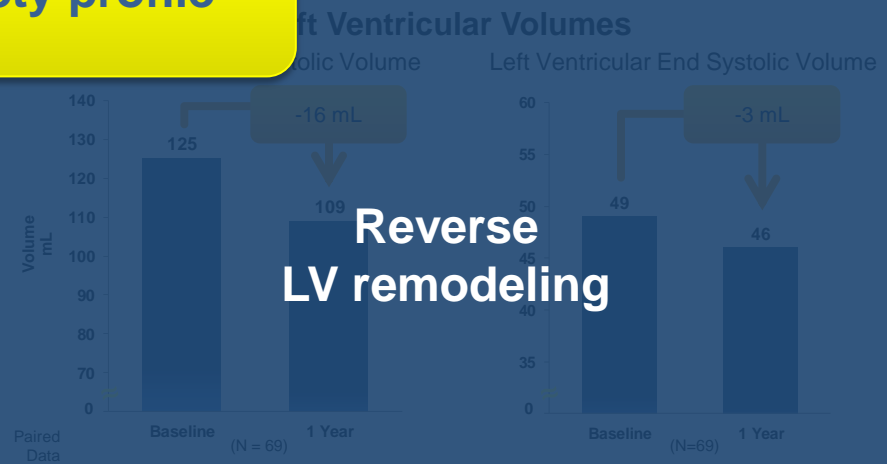


1. First-time procedures only. Includes commercial patients, ACCESS I and ACCESS II patients
 2. Etiology not inclusive of U.S. cases as of 04/14/2014

MitraClip[®] Clinical Evidence



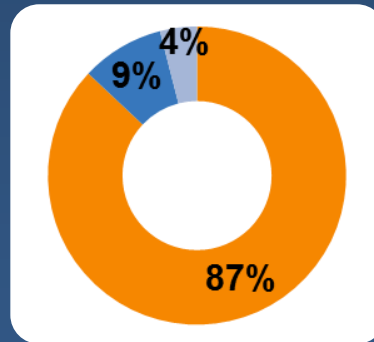
Positive safety profile



Successful Patient Outcomes and Hospital Benefit

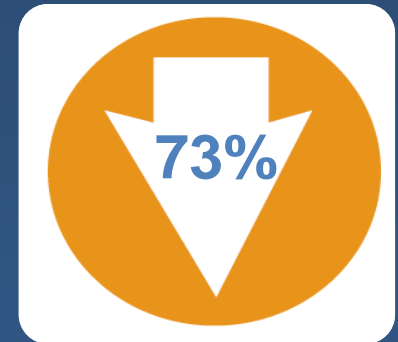


Low hospital length of stay^{1,2}



87% of MitraClip[®] patients discharged to home²

Majority of MitraClip[®] patients discharged to home with or without home health care (9% to nursing home/skilled nursing facility, 4% died prior to discharge)



73% reduction in hospitalization rate³

¹ MitraClip Clip Delivery System Summary of Safety and Effectiveness Data (SSED)

² Data on file at Abbott Vascular.

³ MitraClip Clip Delivery System Instructions for Use.

Patient Selection

A Multidisciplinary Team Approach

Multidisciplinary Heart Team



Interventional
Cardiology



Echo
Cardiology



Heart Failure
Specialist



Cardiac
Surgery

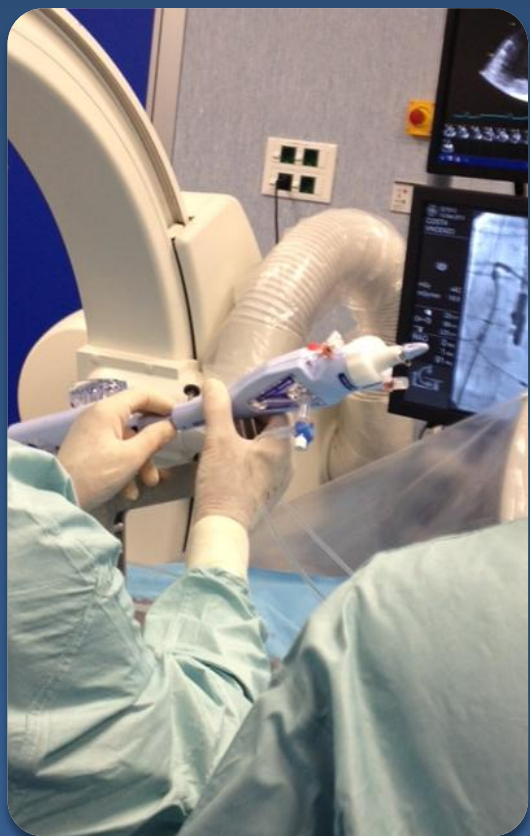
Anatomic patient characteristics should be considered

The primary regurgitant jet is non-commissural, if a secondary jet exists, it must be considered clinically insignificant	✓
Mitral valve area $\geq 4.0\text{cm}^2$	✓
Minimal calcification in the grasping area	✓
No leaflet cleft in the grasping area	✓
Flail width $< 15\text{mm}$ and flail gap $< 10\text{mm}$	✓
LVEF $> 20\%$ or LVESD $< 60\text{mm}$	✓

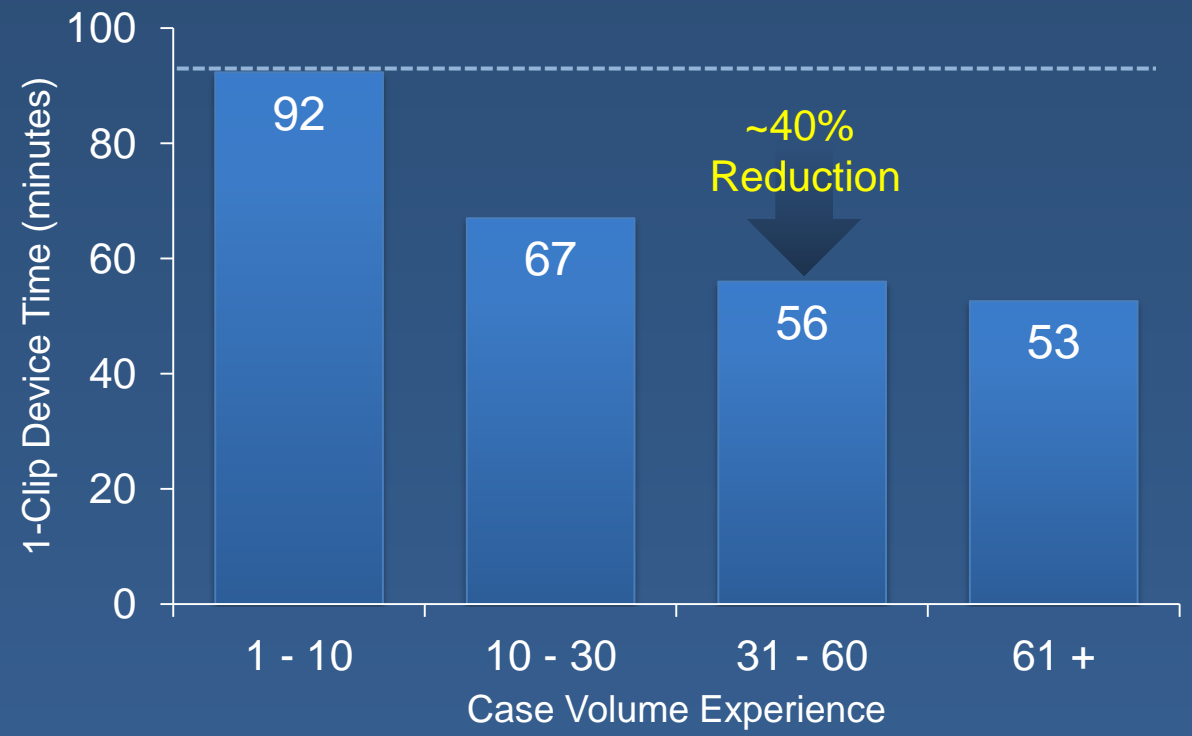
PMVR is contraindicated for the following conditions

Patients who cannot tolerate procedural anticoagulation or post procedural antiplatelet regimen	✗
Active endocarditis of the mitral valve	✗
Rheumatic mitral valve disease	✗
Evidence of intracardiac, inferior vena cava (IVC) or femoral venous thrombus	✗

Learning Curve



MitraClip Device Time*
by Case Volume Experience



*Data courtesy of Abbott Vascular-- 246 hospital commercial experience in 1-Clip device times from Sep 2008 to Sep 2011. All rights reserved.

MitraClip Current Asia Adoption and Future Expansion



Asia Adoption	Patients
Hong Kong	38
Indonesia	24
Malaysia	30
Singapore	84



Future Expansion
China
Japan
Philippines
Taiwan
Thailand
Korea
Vietnam

Summary

- MitraClip is a first in class TMVR technology
- Extensive clinical trial and real world experience with over 16,500 patients
- Reduction in MR, symptom improvement, and reductions in re-hospitalizations
- Committed to bringing technology to Asia



Thank You

Abbott Vascular 3200 Lakeside Dr. Santa Clara, CA 95054 USA, 1.800.227.9902
EVEREST I, EVEREST II, REALISM, and ACCESS-EU are Abbott Vascular sponsored studies.

Caution: This product is intended for use by or under the direction of a physician. Prior to use, reference the Instructions for Use at <http://www.abbottvascular.com/ifu/> for more detailed information on Indications, Contraindications, Warnings, Precautions and Adverse Events.

MitraClip is a registered trademark of the Abbott Group of Companies. www.AbbottVascular.com